

max. operating pressure P=250 bar; A,B=300 bar; T<50 bar

pressure medium – mineral hydraulic oil
20 ... 100 mm /s recommended range

nominal flow – 70 l/min (see "operating " diagram)

n – number of sections – max 8

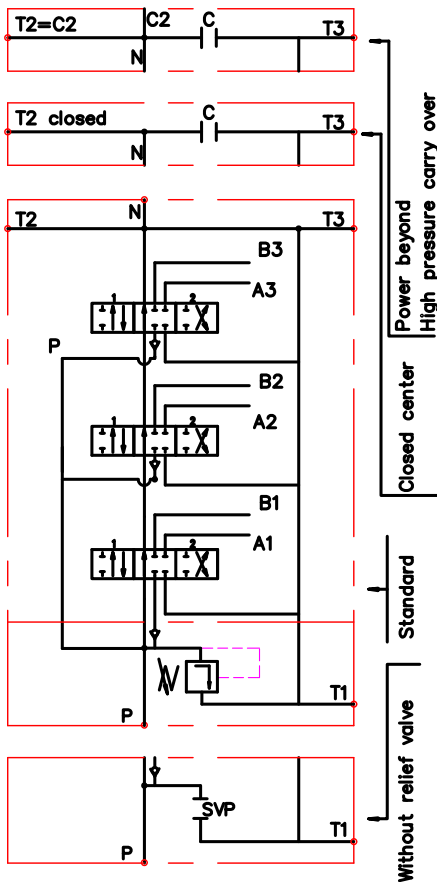
Order code

3 DS 70 R N2/PA1/PA8AyBz/PD1/T2 /G KZ1 P E C2

number of spools	3
directional control valve	DS 70
inlet high pressure – right	R
type of the inlet cover	N2/PA1/PA8AyBz/PD1/T2
first spool distribution type	
second spool distribution type	
tird spool distribution	
type of the outlet cover (T port)	/G
threads (P, A, B, T, N)	KZ1
lever options	P
operation feature	E
with microswitch	
high pressure carry over	C2

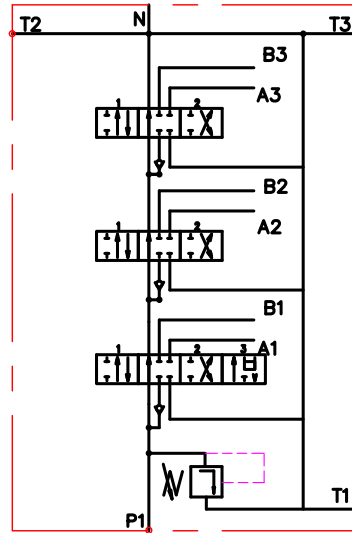
* All detend in operating positions, provided with hydraulic control, have to be ordered explanative.

3 DS 70 N2 / PA1 / PA1 / PA1 / T2



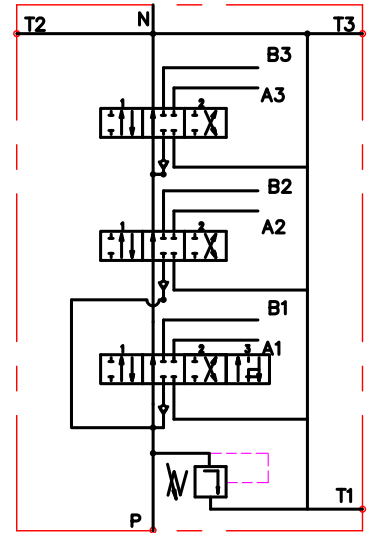
tandem circuit

3 DS 70 N1 / TL12 / TA1 / TA1

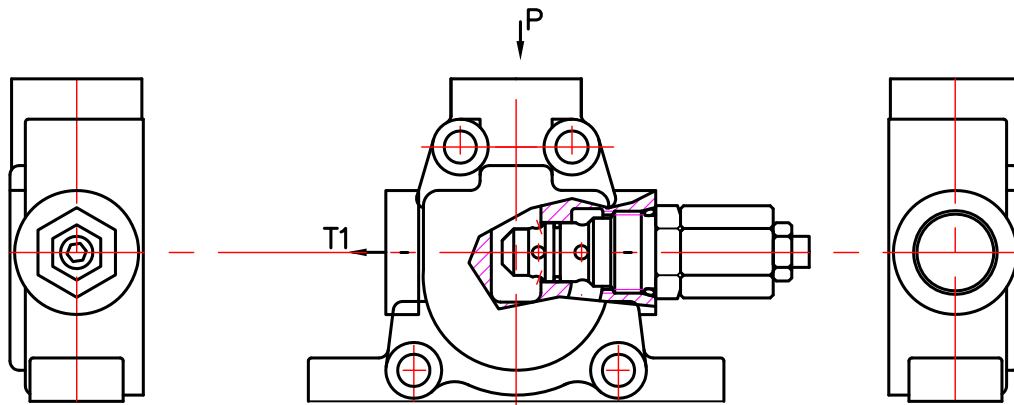


mixed circuit

3 DS 70 N1 / PL12 / PA1 / TA1

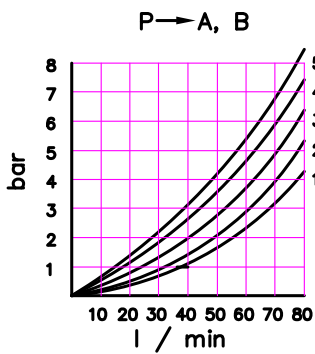
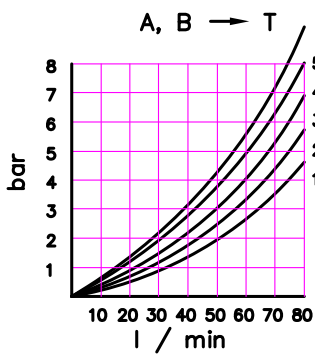
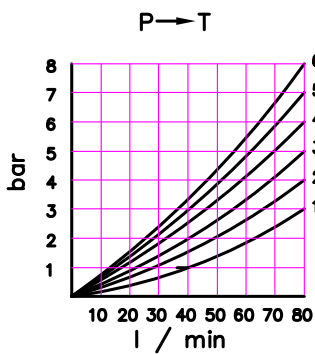
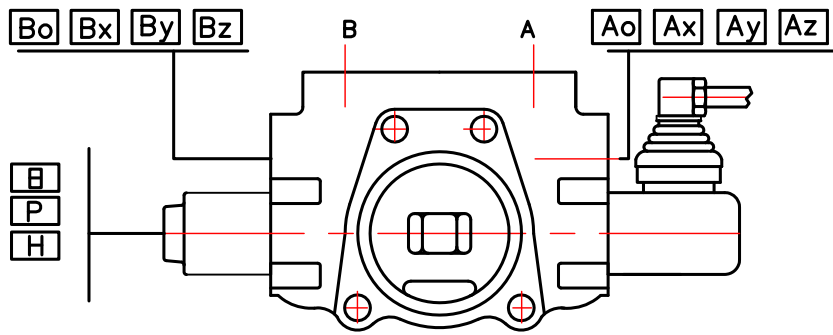


Inlet Cover



code	inlet cover
N1	
N2	
N1svp or N2svp	

Control Valve



operating diagrams

code	spool type
A	
B	
C	
D	
E	
F	
G	
H	
L	

code	spool control
1	
2	
3	
4	
5	
6	
7	
8	
9	
10	
11	
12	
13	

code	threads			code	way of distribution of oil
	P, A, B	T	N		
G	1/2"	3/4"	M26x1.5	P	parallel
M	M22x1.5	M26x1.5		T	tandem

standard

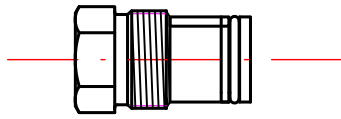
code	with electric switch	
E		Micro-switch Omron - V 165 I C5

code	operation feature	
P		pneumatic pn = 6 bar
H		hydraulic pn = 6 - 20 bar

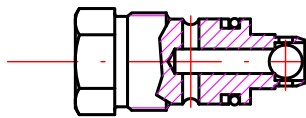
Ao	Bo	plug for A and/or B
Ax	Bx	anti cavitation valve for A and/or B
Ay	By	sek. pressure relief valve for A and/or B
Az	Bz	shockabsorber valve for A and/or B

second valves

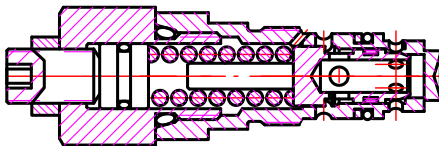
plug "O"



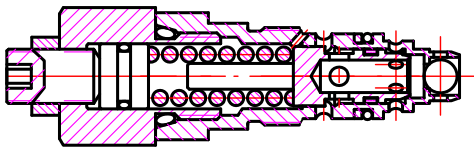
anticavitation valve "X"



second relief valve "y"



combined part relief and anticavitation valve "Z"

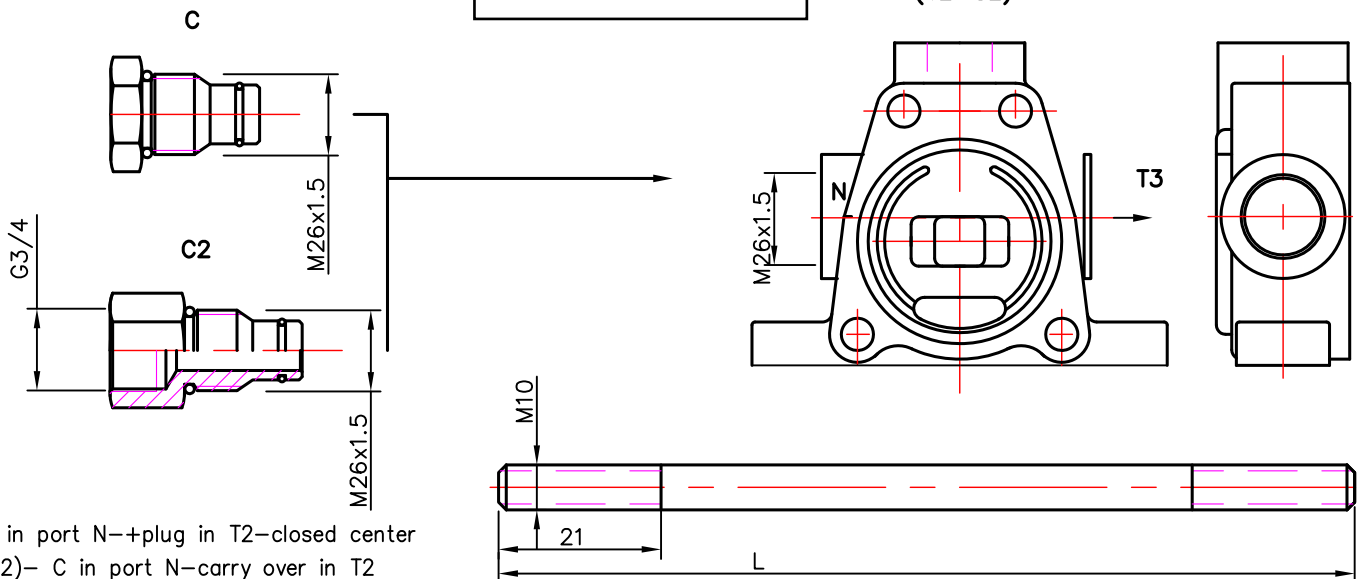


general operation feature

code	ecku3 feature	code	ecku3 feature	code	ecku3 feature
KZ		KY		KI	
KZ1		KY1		KI1	
KZ0		KY0		KI0	
KZ01		KY01		KI01	
-	without lever system				

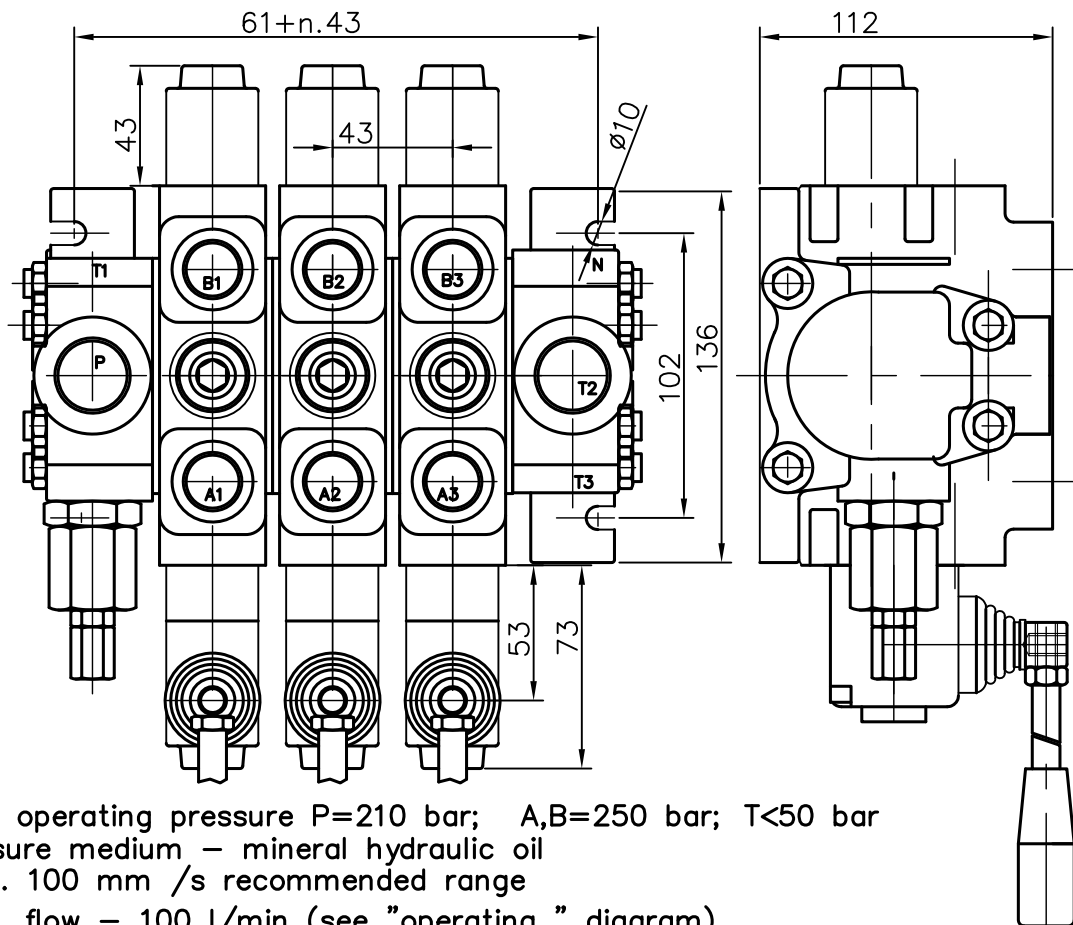
End Plate

T2 or (T2=C2) high pressure carry over



*C - C in port N+plug in T2-closed center
 **(T2=C2)- C in port N-carry over in T2
 ***C2-C2 in port N+Plug in T2- carry over in N

number of spools	1	2	3	4	5	6	7	8
L	145	188	230	275	320	360	405	445



max. operating pressure P=210 bar; A,B=250 bar; T<50 bar
 pressure medium – mineral hydraulic oil
 20 ... 100 mm /s recommended range
 max flow – 100 l/min (see "operating " diagram)
 nominal flow – 80 l/min (see "operating " diagram)
 n – number of sections – max 8

Order code

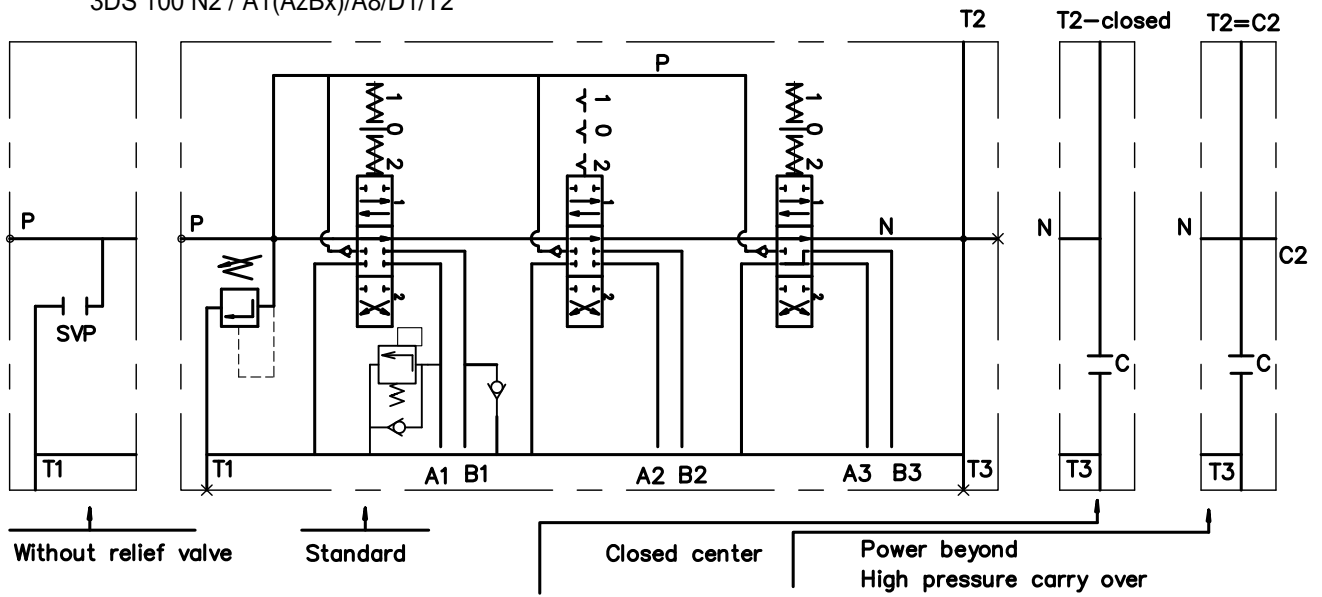
3 DS 100 R N2 /A1(AzBx)/ A8/ D1/ T2 / G KZ1 P E C2

number of spools	3
directional control valve	DS 100
inlet high pressure – right	R
type of the inlet cover	N2
first spool distribution type	/A1(AzBx)/
second spool distribution type	A8/
third spool distribution	D1/
type of the outlet cover (T port)	T2 /
threads (P, A, B, T, N)	G
lever options	KZ1
operation feature	P
with microswitch	E
high pressure carry over	C2

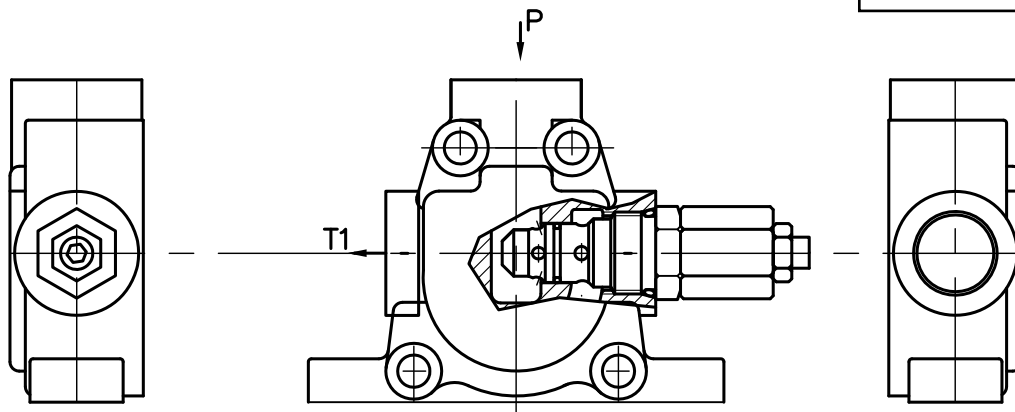
* All detent in operating positions, provided with hydraulic control, have to be ordered explanative.

parallel circuit

3DS 100 N2 / A1(AzBx)/A8/D1/T2

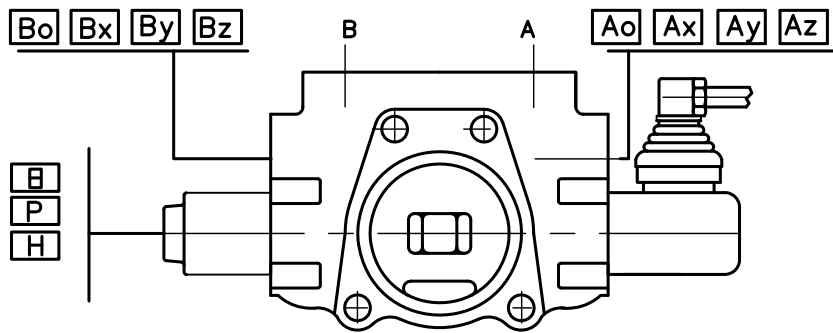


Inlet Cover



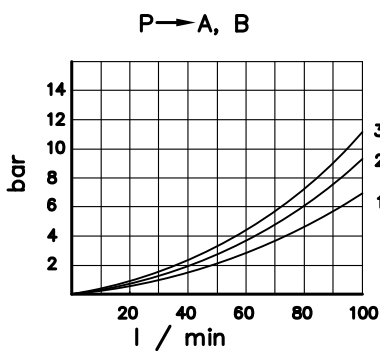
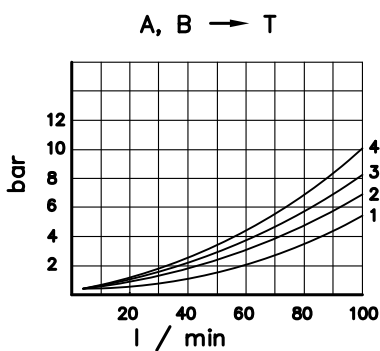
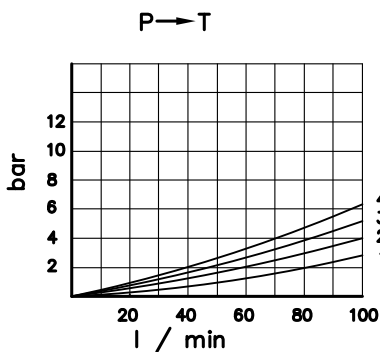
code	/ inlet cover	
N1	N1 (210 bar)	
N1svp		
N2	N2 (210 bar)	
N2svp		

Control Valve



code	spool control		
1			
2			
3			
4			
5			
6			
7			
8			
9			
10			
11			

code std	code met	spool type
A	As	
B	Bs	
C	Cs	
D	Ds	
E	Es	
F	Fs	
G		
H		



operating diagrams

code	lthreads			code	threads		
	P, T	A, B	carry over C2		P, T	A, B	carry over C2
G1	G 3/4	G 1/2	G 3/4	S1	SAE 12	SAE 10	SAE 12
G2	G 3/4	G 3/4	G 3/4	S2	SAE 12	SAE 12	SAE 12

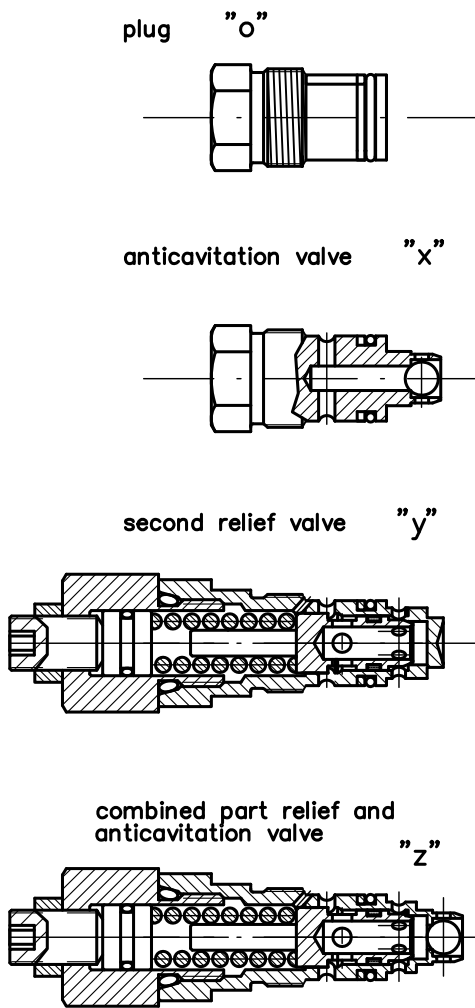
code	with electric switch	
E		Micro-switch Omron - V 165 I C5

code	operation feature	
P		pneumatic pn = 6 bar NPTF 1/8-27
H		hydraulic pn = 6 - 20 bar G 1/4

Ao	Bo	plug for A and/or B (without mark)
Ax	Bx	anti cavitation valve for A and/or B
Ay	By	secondary pressure relief valve for A and/or B
Az	Bz	shockabsorber valve for A and/or B

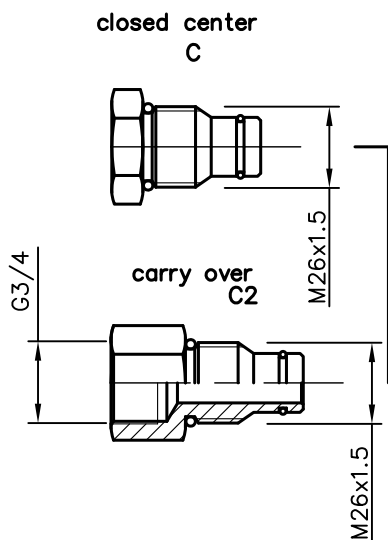
/ second valves

/ general operation feature

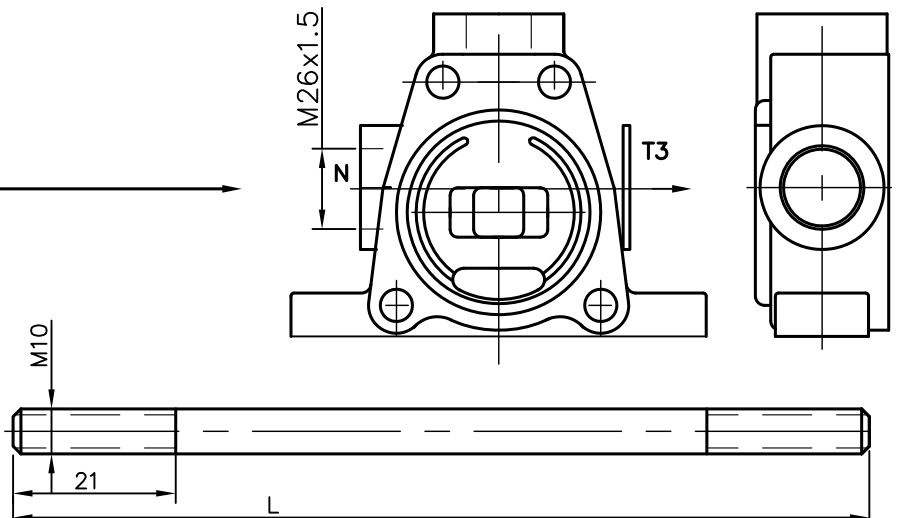


code	ecku3 feature	code	ecku3 feature	code	ecku3 feature
KZ		KY		KI	
KZ1		KY1		KI1	
KZ0		KY0		KI0	
KZ01		KY01		KI01	
-	/ without lever system				

End Plate



T2
or
(T2=C2) high pressure carry over



*"C" in the port N+plug in T2-closed center
 **"C" in the port N-carry over in T2
 ***"C2"+Plug in the T2- carry over in N

number of spools	1	2	3	4	5	6	7	8
L	145	188	230	275	320	360	405	445